

National 4-H Hall of Fame 2013

Kansas



Steve Fisher
Kansas State 4-H Specialist

Home: Manhattan, KS

Nominated by: Kansas 4-H

Major 4-H Accomplishments:

Meade Co. KS 8 year 4-H member, KSU Collegiate 4-H member and President. A 32 year career as Rawlins and Ness Counties Extension Agent, 1 year assistant in State Program Evaluation and 26 years State 4-H Specialist. Created annual Emerald Circle Banquet with KS 4-H Foundation honoring over 2,650 project and state scholarship winners over 30 years.

Honors: Key Award, Outstanding Senior of Collegiate 4-H, Gamma Sigma Delta, Alpha Zeta and Phi Kappa Phi Honoraries, Who's Who in Midwest, NAE4-HA Distinguished and Meritorious Service Awards, Epsilon Sigma Phi Meritorious Service Award, Builder Award by the Director of K-State Research & Extension. Kansas Ag in the Classroom Appreciation Award of Service.

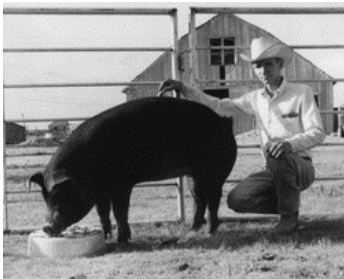
Biography:

Known for his vision, leadership and ability to interact with youth and adults, Steve Fisher was known as "Mr. 4-H" across Kansas. It was said that he knew more Kansans by first name than all other 4-H specialists combined. His position evolved over the years, beginning with leadership to all agriculture and mechanical science projects, then liaison and coordinator for Family & Consumer Sciences, including FACS events at the Kansas State Fair. As a curriculum specialist committed to experiential education, he was one of 7 members of the North Central Region Curriculum Task Force to create a process that became the National 4-H Cooperative Curriculum System.

Steve has touched the lives of thousands of Kansas youth and adults, many of these through his leadership to the Kansas recognition program. Under his guidance, a team designed, trained and implemented a recognition and award plan based on the National 4-H Recognition Model. He served as campus adviser to Collegiate 4-H, Clovia 4-H Scholarship House, 2 terms on Faculty Senate and acting Program Leader for the 4-H Youth Development Program. In retirement, he serves his church as Elder, mission trips to Mexico, Haiti and Guinea; sings in the local Barbershop Chorus, Board member of Friends of McCain Performance Series, RSVP, and KSU Alumni Choir and Choirs Advisory Council Executive Director.

Quote:

What a blessing 4-H has been to me personally. As a young boy, when I needed somewhere to belong and feel valued, my 4-H club experience was there. Words of encouragement from Gene Harris, my County Agent, honored my desire to work hard and be successful. Sales from my swine project financed a large part of my college degree. I met my wife at a social before a Collegiate 4-H Club meeting. I know it was not a coincidence that the very State 4-H staff position I dreamed of was offered to me just 6 years into my Extension career. My desire was to work as hard as I could and pay it forward on behalf of all those adults and staff who have gone before me. Whatever success I may have had, I owe to my Source who makes all things possible.



Steve showing the Grand Champion Duroc gilt at the 1967 Meade Co. Fair.



KAE4-HA 1984-85 officers Kathleen Popken, President Steve Fisher, Lisa Ramsey Lauxman, Janis Fengel, JoEllen Arnold.



Steve and his daughters perform at the 1996 Emerald Circle Banquet.